A photograph of an offshore wind farm with several blue wind turbines in a row across the ocean under a cloudy sky. The image is overlaid with a semi-transparent blue geometric pattern.

Alinta Energy is exploring the potential for an up to \$4 billion offshore wind farm to be developed to supply the Portland Aluminium Smelter and east coast electricity grid.



Quarterly Project Update

December 2021

It's early days, but so far:

- We're investigating a 500km² area around 10km off the coast of Portland, and think it will need to be around 1000 MW to be viable
- Existing data tells us the region's offshore wind is good, but we need to deploy monitoring equipment to see if that's also the case across the investigation site
- The wind farm would connect to the grid via the smelter, and mean we wouldn't need to build new powerlines on private land

Investigations commence

The specifics – where will turbines go, how big they'll be, what it'll look like from the shoreline – are some way off and will be informed by environmental studies, available technology and cost, site investigations, approvals processes and consultation with the community and experts.

We know the area has environmental, commercial and recreational uses and values that need to be thoroughly investigated.

We're interested in hearing what's important to local industry and the community and we will kick off a series of engagement activities in the first half of 2022.

Project benefits



Up to \$4 billion investment



Renewables powered smelter



New wind farm construction and operation jobs



Reduce emissions from ~10% of Victoria's energy use

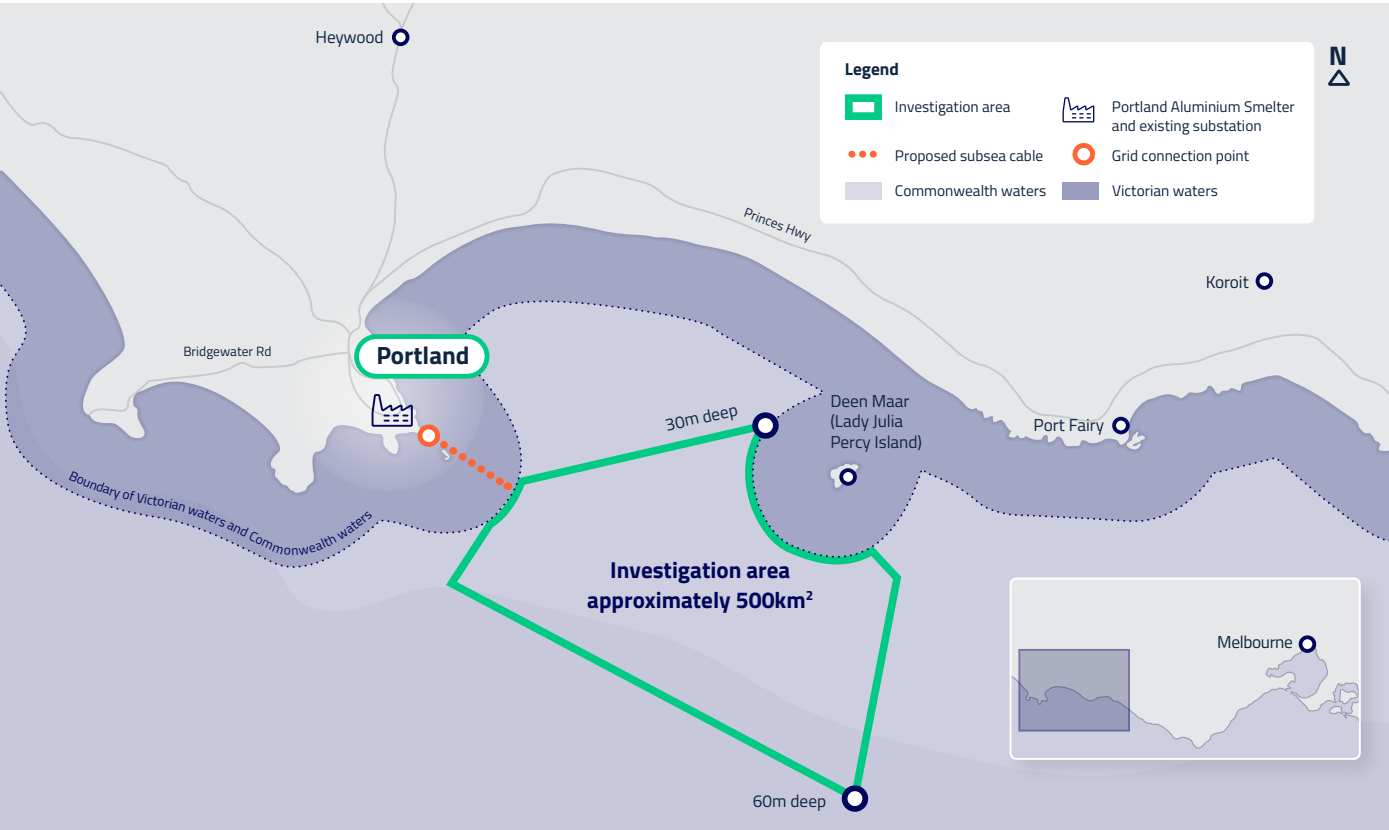
What's happening now?

It's early but we want to be able to speak openly with stakeholders and the local community as our initial investigations progress.

Work on environmental studies, wind monitoring, and consultation will kick off in the first half of next year.



*Timeline is indicative and subject to change



A photograph of an offshore wind farm with several wind turbines in the ocean under a cloudy sky. The image is used as a background for the top half of the page.

Tell us what's important to you

Over the coming months, while we undertake further investigations, we'll be out to speak to the local community to understand what's important to you.

There will be ongoing opportunities throughout the project for the community to provide feedback.

Why Spinifex?

Coastal Spinifex plays an important environmental role in binding and stabilising sand dunes, and we hope the offshore wind farm will have a similarly positive environmental impact.

For the latest consultation opportunities and to sign up to receive updates visit spinifexoffshore.com.au or call **1800 008 335** (Mon-Fri 9AM to 5PM)