

Spinifex Offshore Wind Farm

Project Update - December 2022

Have your say

The project has submitted a referral under the Environment Protection and Biodiversity Conservation Act 1999 (EPBC Act) to the Commonwealth Government seeking approval to start our geophysical and geotechnical investigations.

The referral explains the early investigation activities we want to undertake, their potential impacts and how we plan to manage these impacts.

The referral is open for public comment. You can find it on the EPBC Public Portal under this EPBC number: 2022/09359 or by following [link](#) or the QR code.



Geophysical investigations

Pending approval, we'll be starting our geophysical investigations from January next year for a period of approximately 8 weeks.

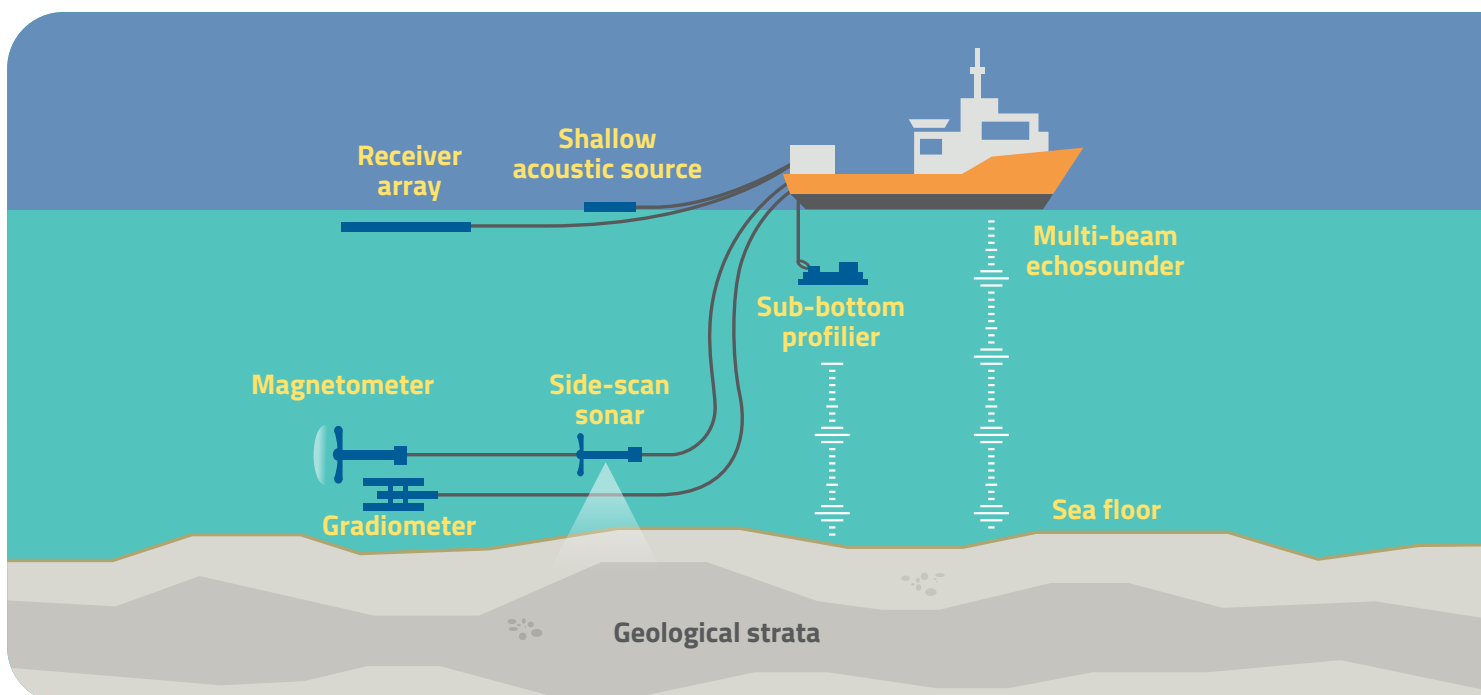
Geophysical studies involve using a ship with equipment that emits sound waves toward the seabed. Listening devices record how long the sound takes to return. This data helps us determine the likely seabed conditions. This helps inform the type of foundations we need to use, as well as identifying marine habitats and underwater heritage.

What to know

- Observers will be on board to watch for whales and other marine animals and implement shut-down procedures should whales be spotted within 500 meters from the ship
- A mini air gun may be used as the acoustic source, these are about 60 times smaller and less powerful than the air gun arrays commonly used in seismic exploration for oil and gas
- Beyond 150metres away, the sound levels are below the level known to disturb whales
- We expect noise impacts to marine mammals to be minimal and temporary

Geophysical investigations include mapping the ocean floor, measuring water depths, collecting information about marine habitat and underwater heritage.

The information gathered will support environmental and cultural heritage assessments.



Community Engagement

Thank-you to everyone who came out and had a chat to us at the Upwelling Festival.

We had a great time watching the parade and learning about the Upwelling and how it attracts whales and other marine mammals to the area.

We know whales and the ocean ecosystem are very important to you. We'll be undertaking a lot of marine studies to better understand how building an offshore wind farm might impact the environment and what measures we might need to put in place to minimise these impacts.

We'll keep the community up to date on our progress and what we find as we do this work.

Local Industry Capability Study

We're starting a Local Industry Capability Study to understand what local skills and services could support an offshore wind industry around Portland.

We'll be contacting businesses in different sectors to gather information about local capability and to learn what support or training they might need to work in offshore wind.

Fishers and marine users engagement

From next year we'll also be reaching out to fishers and other marine users to hear about how you use Portland Bay.

We've been talking to local fishers, businesses and clubs to gather information on who we should be talking to, but if you're a marine user who we haven't heard from, please get in touch and we'll include you in our future engagement sessions.



Australian Renewable Energy Agency

This Project received funding from the Australian Renewable Energy Agency (ARENA) as part of ARENA's Advancing Renewables Program.

The views expressed herein are not necessarily the views of the Australian Government, and the Australian Government does not accept responsibility for any information or advice contained herein.

If you're interested in participating in these future sessions, or if you have questions or views about the project you want to share, give us a call or send us an email. We'd love to hear from you!

🌐 spinifexoffshore.com.au
@ info@spinifexoffshore.com.au
☎ 1800 008 335 (Mon-Fri 9am-5pm)