

Spinifex Offshore Wind Farm

Survey notification - January 2025

Update on acoustic monitoring activities

About the project

Alinta Energy and Parkwind (owned by JERA Nex) are developing the Spinifex Offshore Wind Farm.

The Project is a 1.2GW offshore wind farm proposed off the coast of South West Victoria. Once operational, it could generate enough electricity to power approximately 750,000 Victorian homes, meeting around 10% of the state's energy needs.

Acoustic monitoring activities

We are starting some of our baseline environmental studies to understand how marine mammals use the area.

This includes acoustic monitoring to record low and high frequency noises from cetaceans such as dolphins and whales.

We will deploy four fixed passive acoustic monitoring (PAM) moorings which will record cetaceans.

Following consultation and feedback from commercial fishing operators we have finalised the locations of the four PAMs. The locations and a diagram of the equipment set-up can be found below.

Based on the feedback provided the PAMs will be located in areas that avoid activities at high risk of entanglement such as trawl fishing.

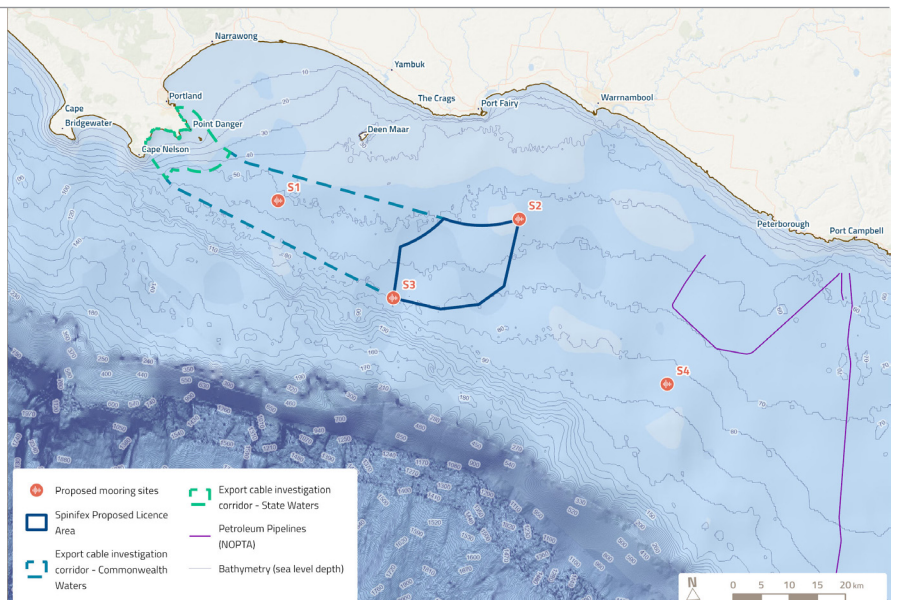
We will start deployment in late January 2025 and the PAMs are likely to remain in place for 2-3 years. It is expected trips to service the PAM moorings and equipment will occur every six months.

In the unlikely event of an entanglement the PAM moorings are unlikely to damage fishing vessels and equipment due to their small weight and size, but may damage our monitoring equipment.

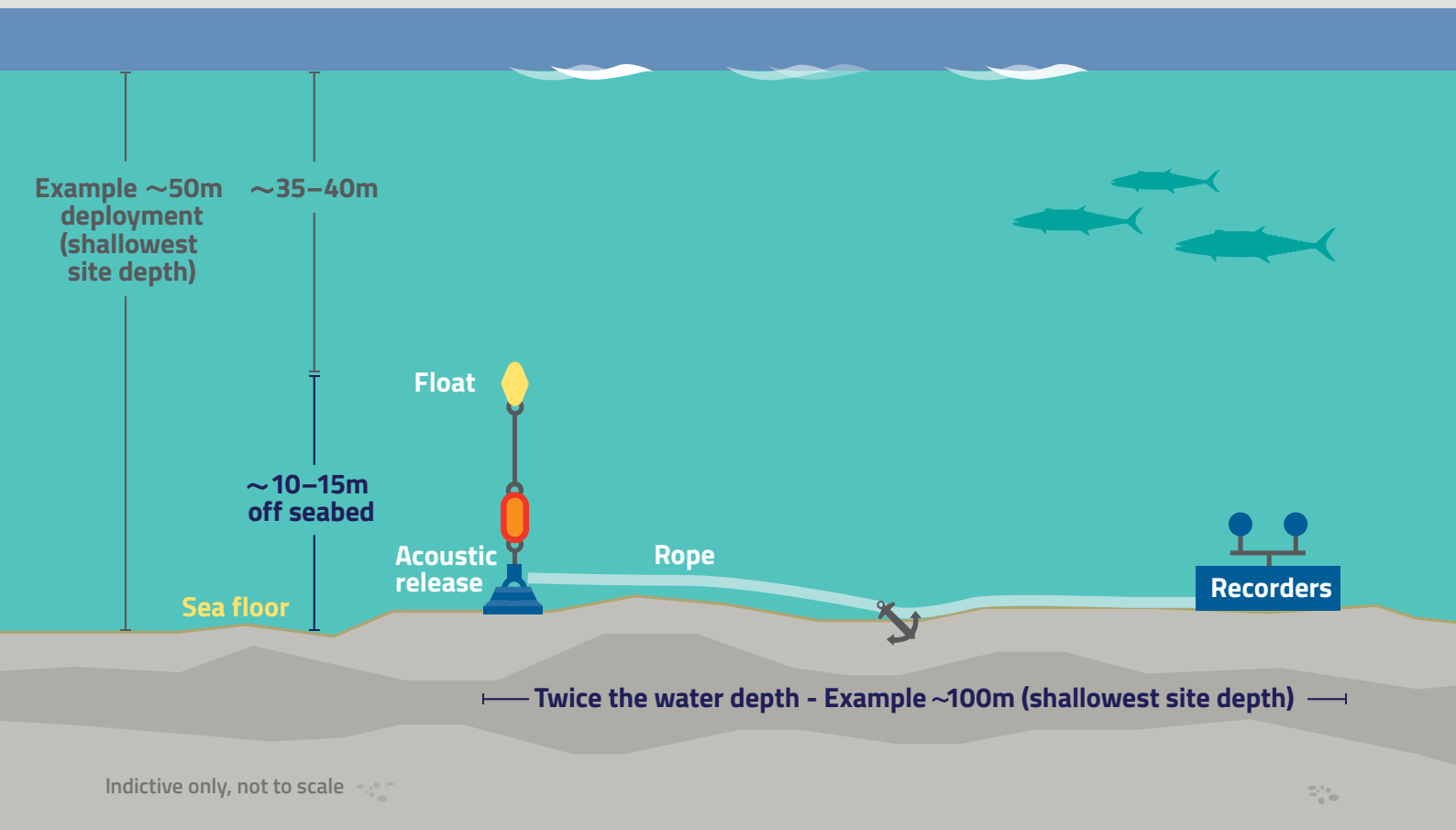
An official notice to mariners has been issued kindly requesting vessels to avoid undertaking any potential damaging activities in the exact vicinity of the PAM logger locations. The exact locations are outlined in the table below.

PAM mooring points

PAM ID	Latitude (DD.MM.mmm)	Longitude (DD.MM.mmm)	Water Depth (m)
S1	38°30.851S	141°49.171E	50
S2	38°33.856S	142°18.528E	55
S3	38°40.788S	142°02.603E	70
S4	38°50.390S	142°35.638E	85



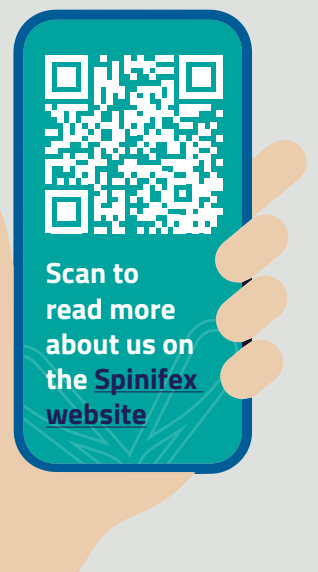
Passive acoustic monitoring set-up



Seabed moorings

Seabed moorings consist of the noise logger assembly, which is tethered by a rope to a mooring and release mechanism. The layout of the equipment will be no more than 100m in length along the seabed, and no less than 30m below the sea surface.

The PAM systems are set to record underwater sound recordings for 5 minutes every 15 minutes throughout the duration of deployment.



FIND OUT MORE

If you'd like to find out more about the project, provide feedback or get involved in upcoming consultation activities, please visit our website or get in touch via:

[spinifexoffshore.com.au](https://www.spinifexoffshore.com.au)
info@spinifexoffshore.com.au
1800 008 335 (Mon-Fri 9am-5pm AEST)

SPINIFE
Offshore Wind Farm