



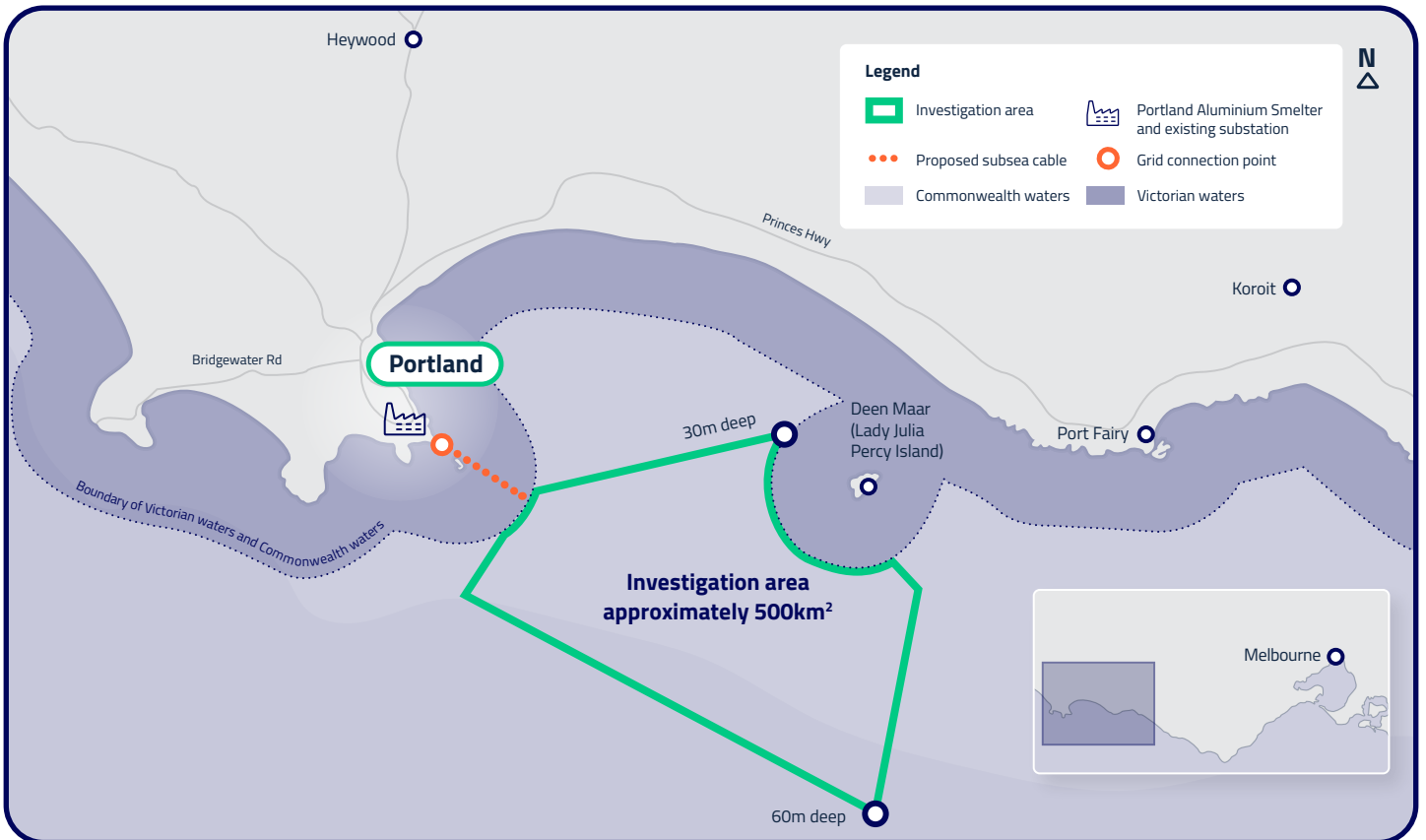
Quarterly Project Update

April 2022

Alinta Energy is exploring the potential for an up to \$4 billion offshore wind farm to be developed to supply the Portland Aluminium Smelter and east coast electricity grid.

Fast Facts

- Up to \$4 billion investment
- Around 1000 MW (1 GW)
- About 10km from the Portland shoreline
- 500km² investigation area identified
- Potential to provide the Portland smelter with up to 100% renewable energy
- Potential high voltage grid connection at the smelter
- More than 1000 jobs in construction and 100 in operations



For the latest consultation opportunities and to sign up to receive updates visit spinifexoffshore.com.au or call 1800 008 335 (Mon-Fri 9AM to 5PM)



